

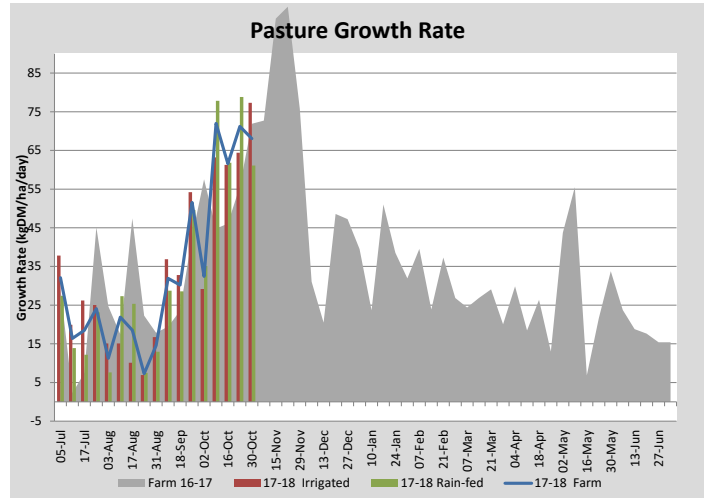
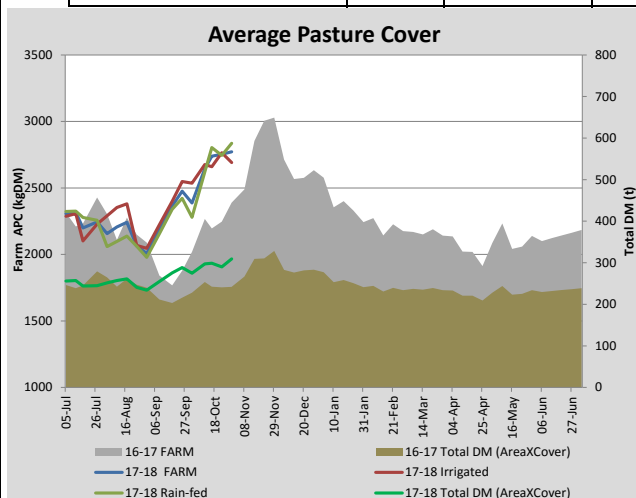
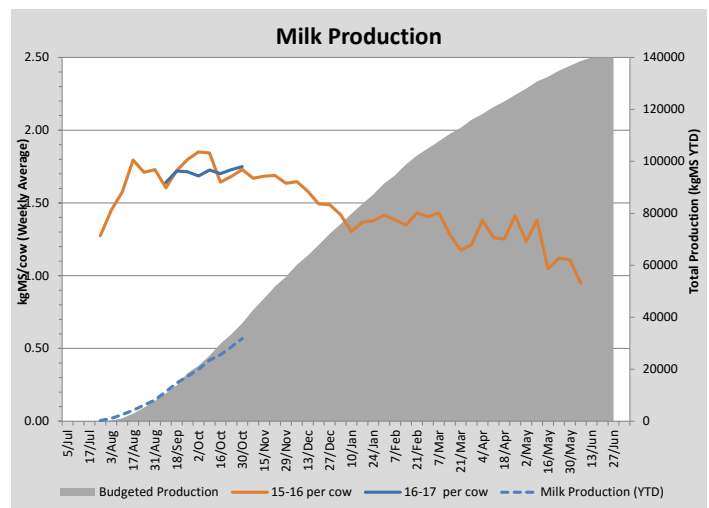
## Key Summary Points

- 1** Nitrogen has been applied based on the weather forecast for drier conditions.
- 2** Pasture growth has started to decline on the dryland areas of the farm.
- 3** Mating of cows has started with 209 mated in the first four days.

PASTURE INFORMATION	Farm			Irrigated			Rain-fed		
	Last Week	This Week	Variation	Last Week	This Week	Variation	Last Week	This Week	Variation
Grazed milking area (ha)	105.3	111.6	6.3	40.5	49.5	9.0	71.1	62.1	-9
Rotation Length (days)	34	41	7	108	29	-79	21	59	38
Grazing allocation per day (ha)	3.1	2.8	-0.4	0.4	1.7	1.3	2.7	1.1	-1.6
Average time since last grazed (days)	33	31	-2	36	36	0	30	27	-3
Leaf appearance rate (days per leaf)	12	10	-2	12	10	-2	12	10	-2
Average Pasture Cover (kgDM/ha)	2754	2772	18	2765	2692	-73	2745	2836	91
Pasture Growth Rate (kgDM/ha/day)	71	68	-3	64	77	13	79	61	-18
Post Grazing Biomass (kgDM/ha)	1616	1726	110						
Nitrogen applied YTD (kgN/ha)	16	30	14	11	15	4	5	14	9

\*Please note all pasture calculations detailed above are based on the current Grazed Milking Area

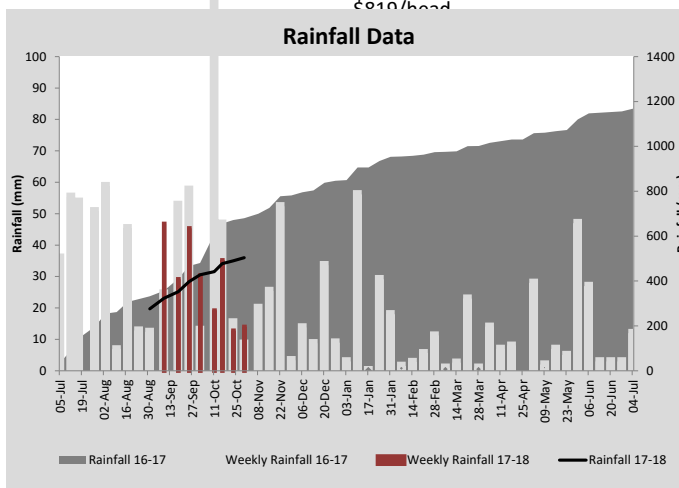
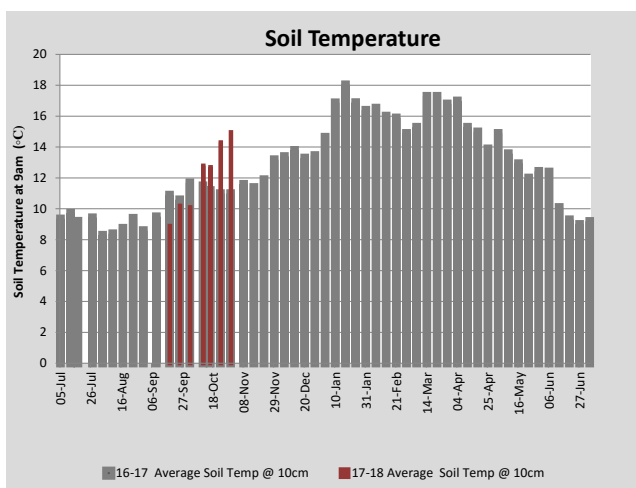
MILK PRODUCTION	Last Week	This Week	Variation
Average No. cows in milk (vat)	312	315	3
Litres per cow	23.2	23.1	-0.1
% Fat	4.15	4.29	0.14
% Protein	3.32	3.30	-0.02
MS/cow/day	1.73	1.75	0.02
MS/ha/day	4.77	4.88	0.10
BMCC	160,143	164,429	4,286
Average Liveweight (kg)	0	0	0
	Budget	To Date	Variation
Total Milk Production (kgMS)	37,750	31,809	84%
MS/ha YTD	331	324	98%



Last 7 days					
Milkers Diet	kg DM	MJ ME	CP (%)	NDF (%)	\$/cow
Pasture Intake	16.0	12.3	15.1	41.5	0.0
Concentrates	4.0	12.8	14.0	10.0	0.0
Silage	0.0	0.0	0.0	0.0	0.0
Grazed forage	0.0	0.0	0.0	0.0	0.0
Other feeds	0.0	0.0	0.0	0.0	0.0
<b>Total</b>	<b>20</b>	<b>248</b>	<b>14.9</b>	<b>35.2</b>	<b>0</b>
<b>Target</b>			<b>16-18</b>	<b>&gt;33</b>	<b>0</b>



Some of the bulls reared last year have been sold. The first group averaged \$819/head



Analysis			
Expected growth rate next 7 days (kgDM/ha/day)	60	Target Leaf Grazing Stage	2.0-2.5
Total Demand from Pasture (kgDM/ha/day)	35	Predicted APC 7 days time	2947
APC balance (kgDM/ha/day)	25	Predicted APC Change	175.2

## Discussion

Nitrogen has been applied over the past fortnight to boost pasture growth before the soil dries out and pasture growth declines on the dryland portion of the farm. Re-growth on the paddocks cut for silage has been excellent. The paddocks sown with new grass or turnips are being irrigated using travelling irrigators. The new plants have started to emerge and it is very important at this stage to be vigilant in checking for pests. Mating of the milking herd started on October 26 and 209 cows were mated in the first four days. Some of the dairy bulls reared last season have been sold. The first group averaged 210 kg dressed weight and sold for \$3.90/kg (average \$819/hd).

# 30 October 2017

