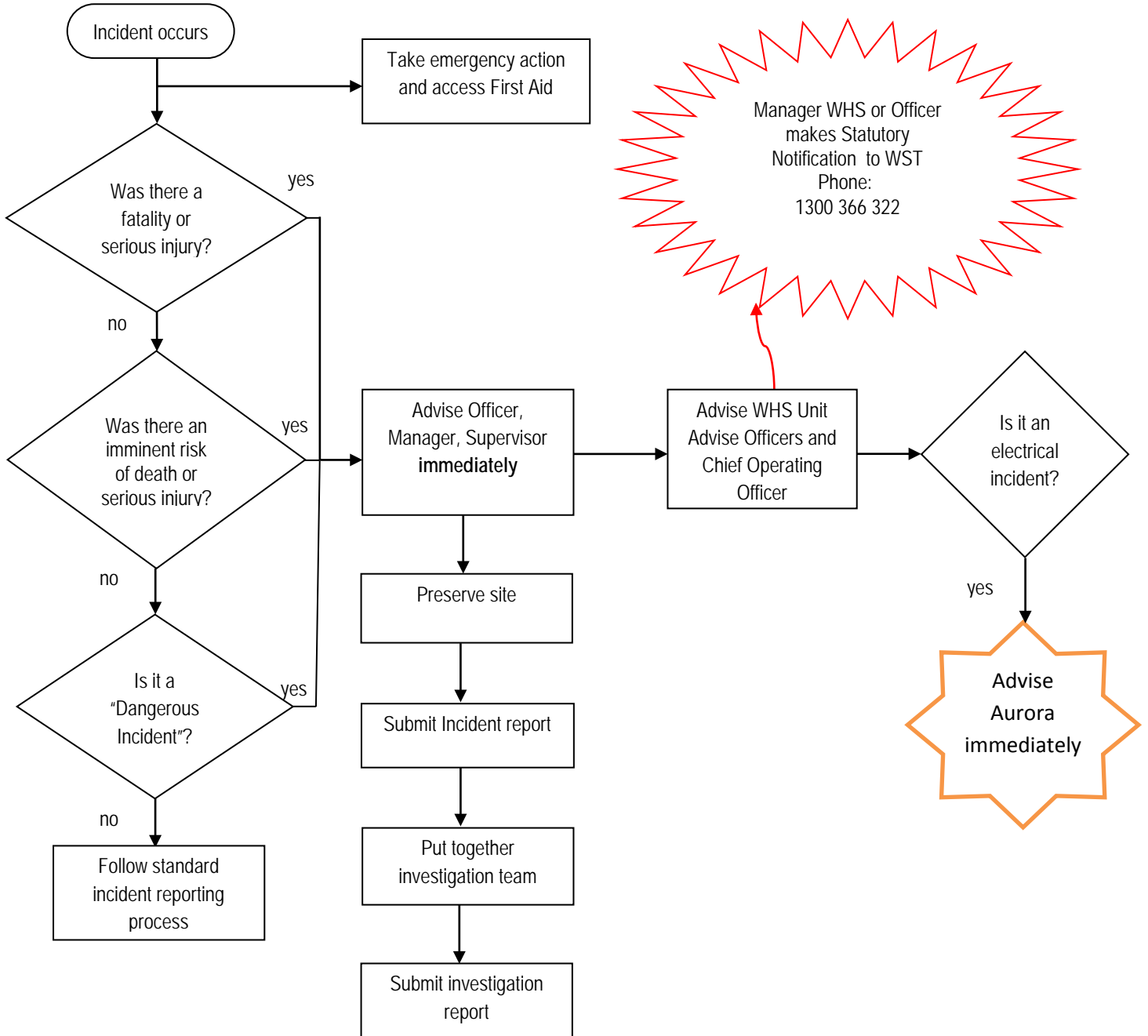


Appendix A

# Incident Response Process



**dangerous incident** means an incident in relation to a workplace that exposes a worker or any other person to a serious risk to a person's health or safety emanating from an immediate or imminent exposure to –

- (a) an uncontrolled escape, spillage or leakage of a substance; or
- (b) an uncontrolled implosion, explosion or fire; or
- (c) an uncontrolled escape of gas or steam; or
- (d) an uncontrolled escape of a pressurised substance; or
- (e) electric shock; or
- (f) the fall or release from a height of any plant, substance or thing; or
- (g) the collapse, overturning, failure or malfunction of, or damage to, any plant that is required to be authorised for use in accordance with the regulations; or
- (h) the collapse or partial collapse of a structure; or
- (i) the collapse or failure of an excavation or of any shoring supporting an excavation; or
- (j) the inrush of water, mud or gas in workings, in an underground excavation or tunnel; or
- (k) the interruption of the main system of ventilation in an underground excavation or tunnel; or
- (l) any other event prescribed by the regulations – but does not include an incident of a prescribed kind.

# Statutory Notification Process

## Appendix B

