

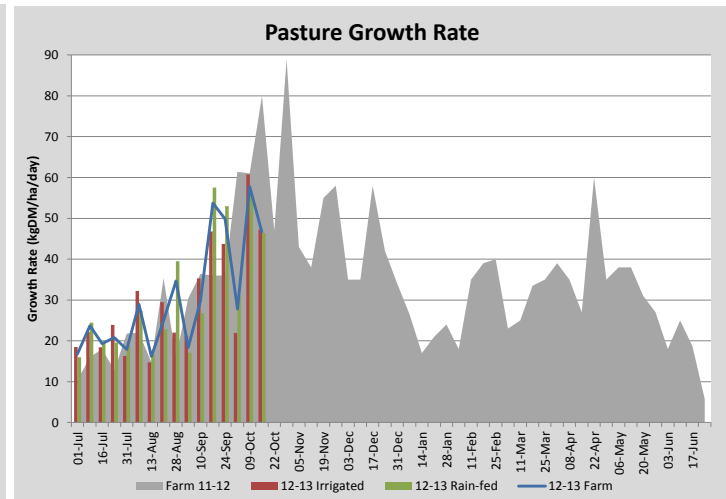
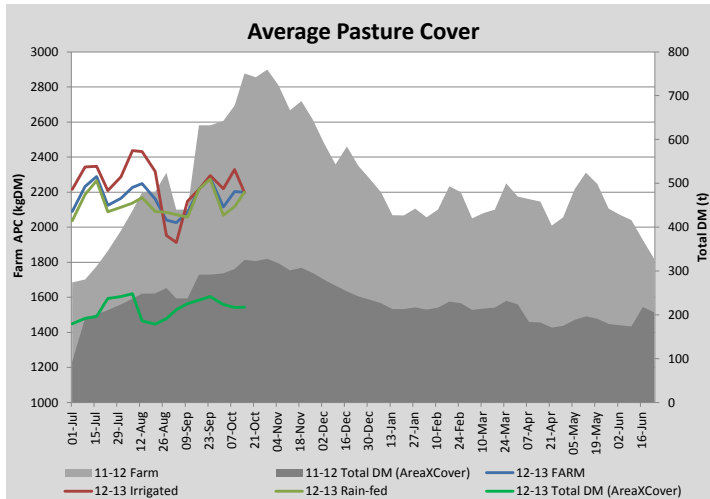
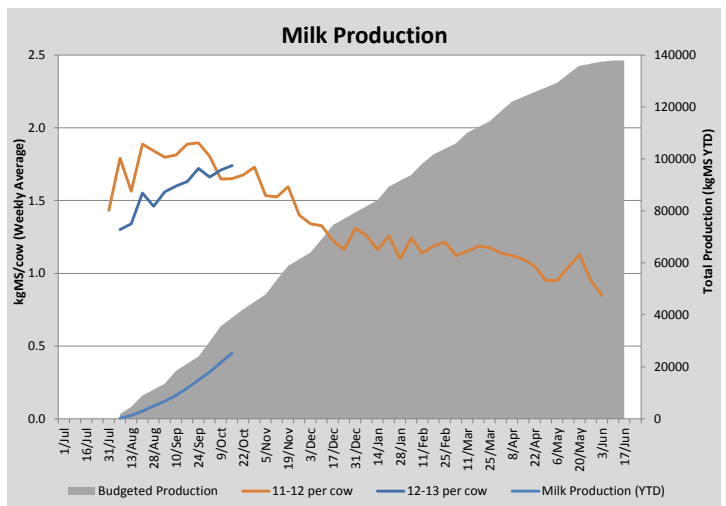
## Key Summary Points

- 1** Growth rates have backed off slightly the last 7 days but look set to take off over the coming week
- 2** We are getting ready for the start of mating and will be using 'scratchy' heat detection aids this year to help staff identify heats
- 3** Milk production continues to climb as the mid calving cows hit peak lactation

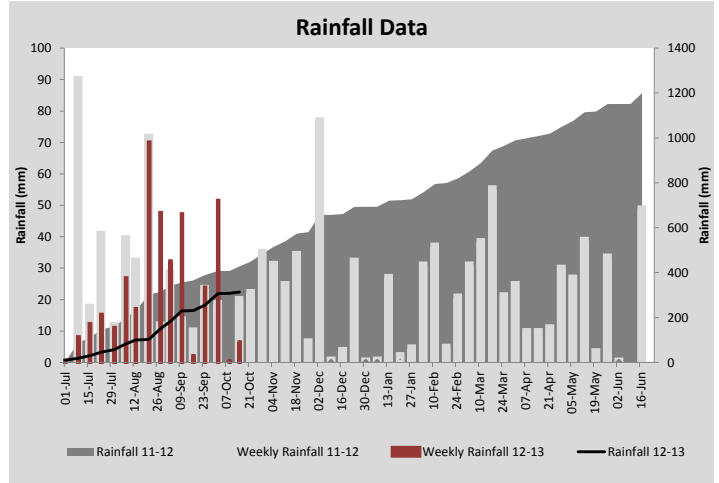
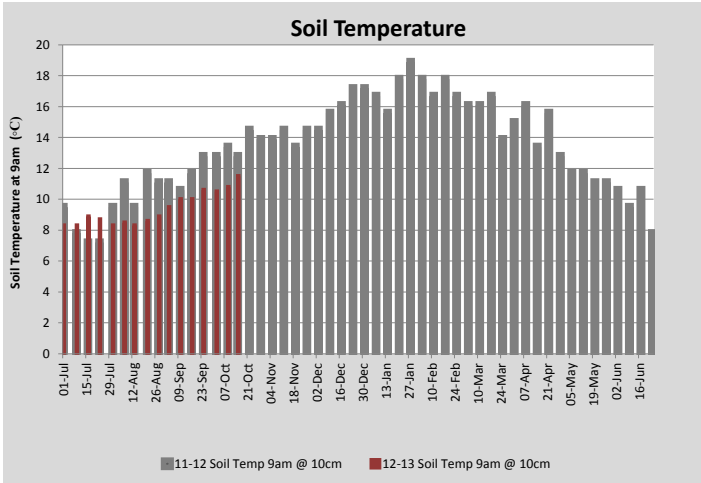
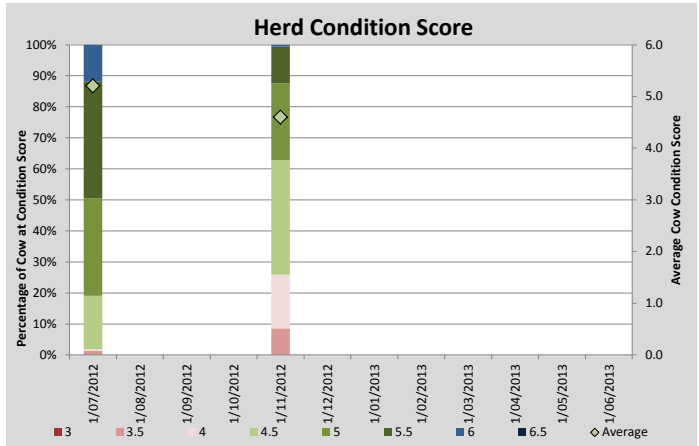
PASTURE INFORMATION	Farm			Irrigated			Rain-fed		
	Last Week	This Week	Variation	Last Week	This Week	Variation	Last Week	This Week	Variation
Grazed milking area (ha)	98.5	98.9	0.4	58.2	58.6	0.36	40.3	40.3	0.00
Rotation Length (days)	26	26		21	21		31	31	
Grazing allocation per day (ha)	3.8	3.8	0.00	1.9	1.9	0.00	1.9	1.9	0.00
Average time since last grazed (days)	31	31	-0	30	31	-1	32	31	-1
Leaf appearance rate (days per leaf)	11	10	-1	11	10	-1	11	10	-1
Average Pasture Cover (kgDM/ha)	2203	2199	-4	2329	2198	-131	2117	2199	83
Pasture Growth Rate (kgDM/ha/day)	58	47	-11	61	47	-14	56	46	-9
Post Grazing Biomass (kgDM/ha)	1550	1550	0						
Nitrogen applied YTD (kgN/ha)	67	79	12	0	6	6	0	6	6

\*Please note all pasture calculations detailed above are based on the current Grazed Milking Area

MILK PRODUCTION	Last Week	This Week	Variation
No cows in milk (vat)	300	305	5.00
Litres per cow	24.8	24.6	0.20
% Fat	3.77	3.92	0.15
% Protein	3.09	3.15	0.06
MS/cow/day	1.71	1.74	0.03
MS/ha/day	4.17	4.49	0.32
BMCC	173	183	10.00
Average Liveweight (kg)			
	Budget	To Date	Variation
Total Milk Producton (kgMS)	35649	25330.00	71%
MS/ha YTD	347	226	-121



Milkers Diet	kg DM	ME	CP	NDF	\$/cow
Pasture Intake	15.0	12.5	0.0	0.0	0.0
Concentrates	3.0	12.0	0.0	0.0	0.0
Silage	0.0	0.0	0.0	0.0	0.0
Grazed forage	0.0	0.0	0.0	0.0	0.0
Other feeds	0.0	0.0	0.0	0.0	0.0
<b>Total</b>	<b>18</b>	<b>223.5</b>	<b>0</b>	<b>0</b>	<b>0</b>
<b>Target</b>	<b>18</b>		<b>0</b>	<b>0</b>	<b>0</b>



Analysis			
Expected growth rate next 7 days (kgDM/ha/day)	65	Target Leaf Grazing Stage	2.2
Total Demand from Pasture (kgDM/ha/day)	48	Predicted APC 7 days time	2316
APC balance (kgDM/ha/day)	17	Predicted APC Change	116.7

## Discussion

Cows have all been conditioned scored this week prior to mating. Mating will begin next week (23/10 for a 1 August calving date). The condition scoring indicates an average condition loss of 0.5 from before calving to now. This is an acceptable condition loss over this period, however we will be targeting the cows at 3.5 score with additional concentrate to help improve their condition. Pasture growth rates dropped slightly during the last week which has helped us keep on top of pasture quality. We expect higher growth rates of around 65kgDM/ha/day for the next 7 days. We will aim to cut our first lot of silage paddocks in the next week and get the paddocks back in the rotation. Soil moisture readings indicate we should be starting irrigation very soon (18-25 centibars at 30cm). We are busy getting the final stages of the pivot complete to allow irrigation as soon as it is required. The predicted growth rates show us continuing further into surplus this week and this will be managed by removing more paddocks for silage as required. We are keeping to a 27 day rotation for the next week however we will start to manage rain-fed and irrigated pastures on different rotation lengths to account for the likely future variation in leaf emergence rate as soil moisture becomes limiting. For this week this means us being on a 20 day rotation for the irrigated pasture and a 37 day rotation for the rain-fed portion of the farm (60% of the available area).

# 15 October 2012

