

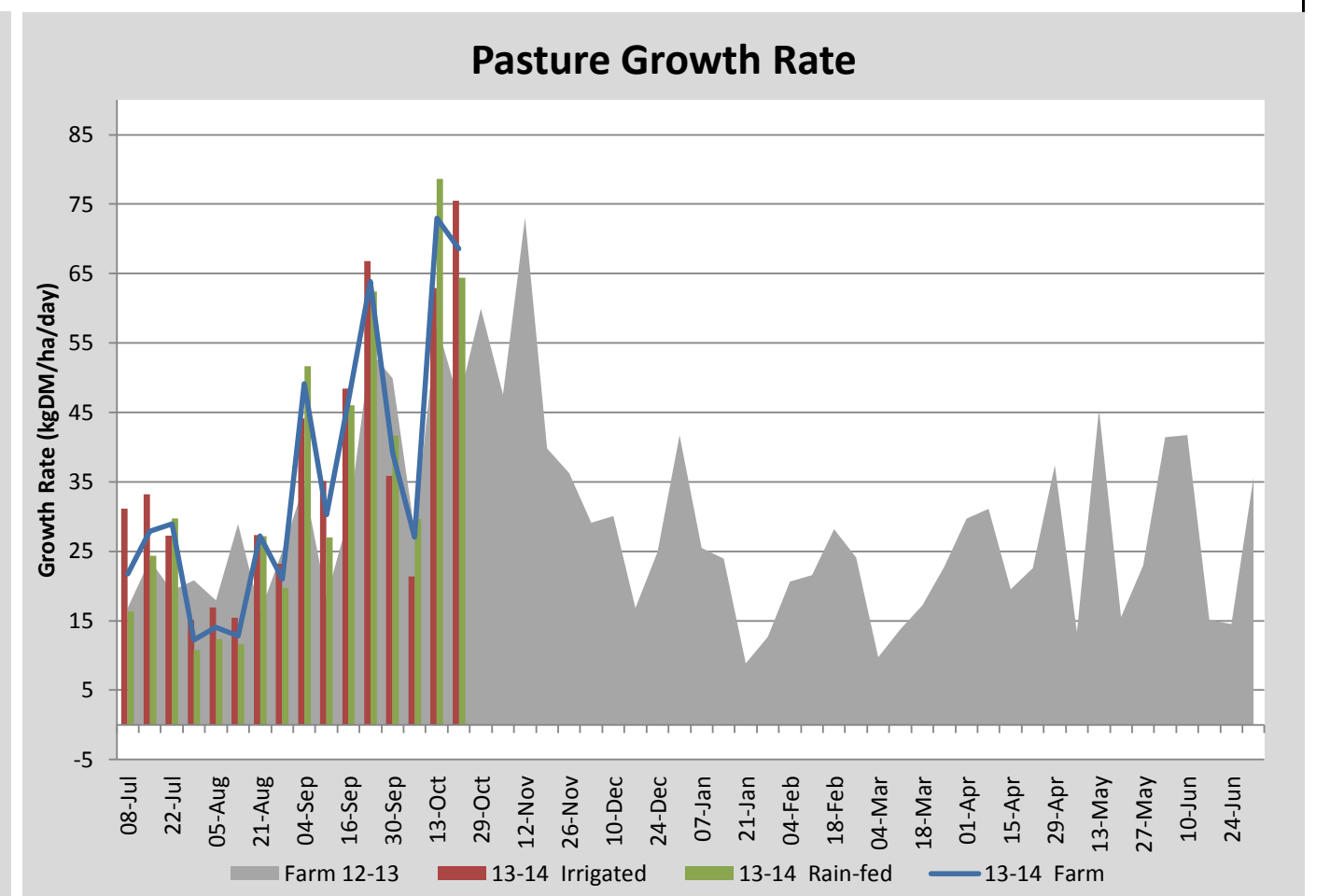
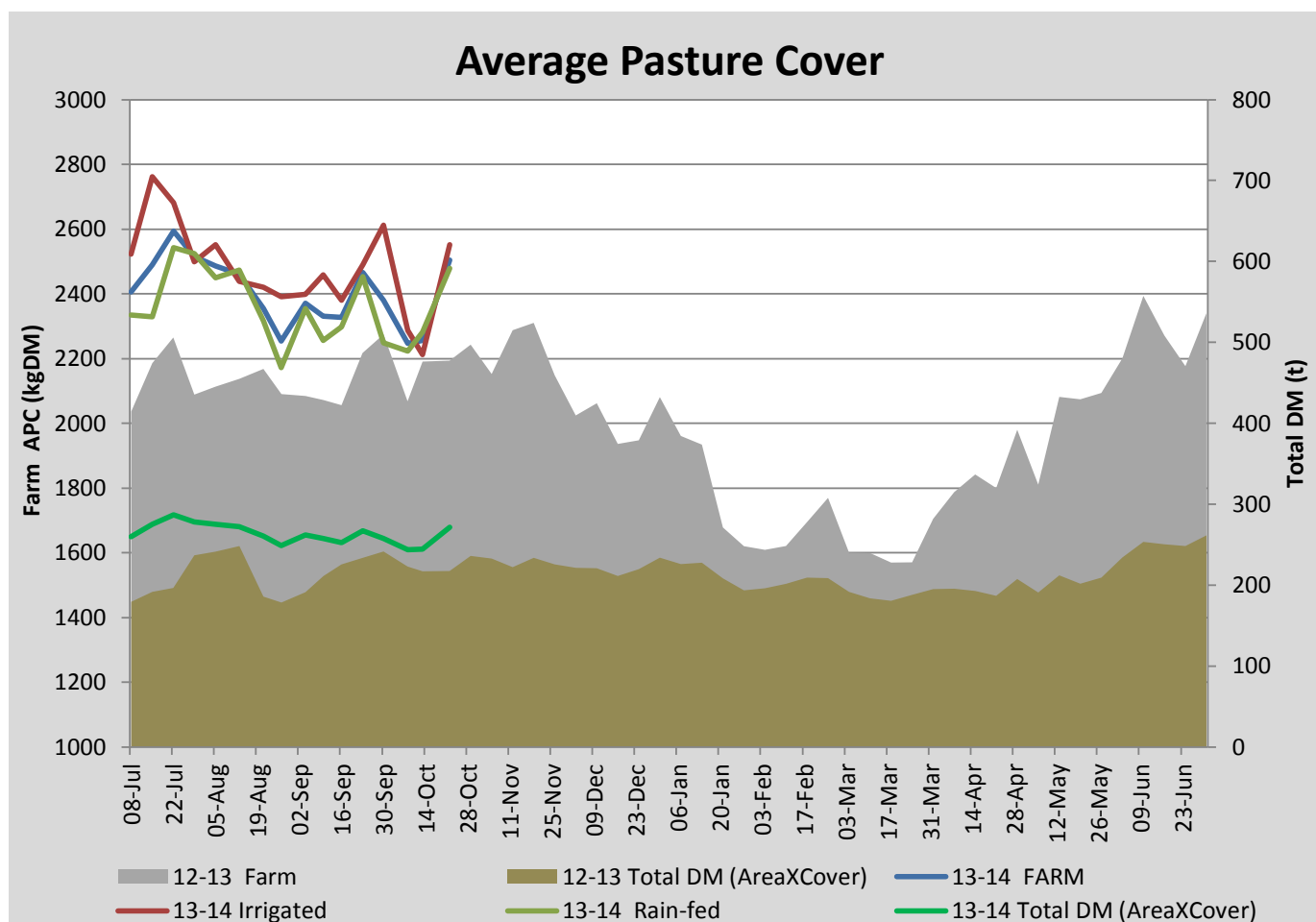
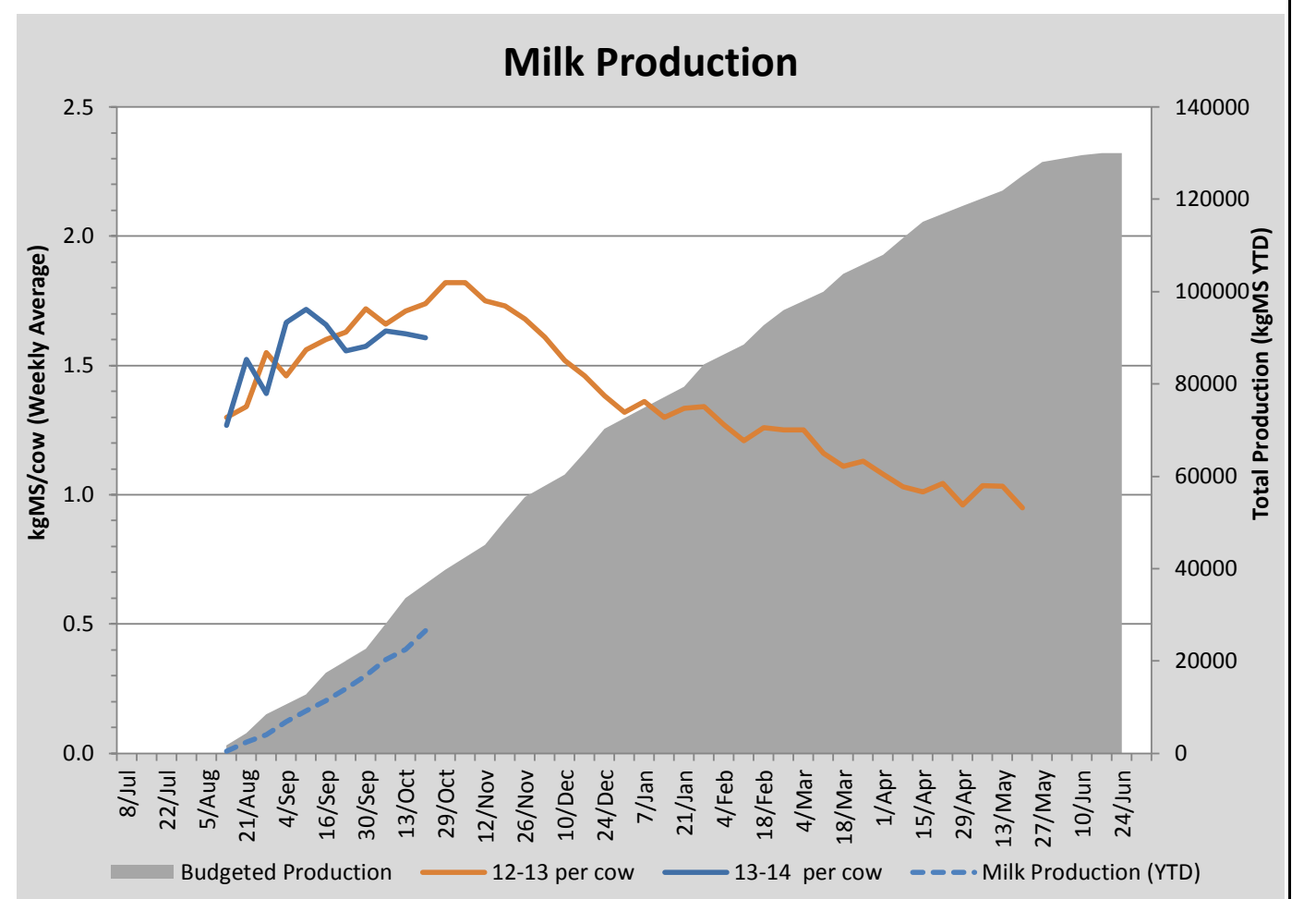
Key Summary Points

- 1 Average pasture cover has increased significantly over the past week to 2505 kg DM/ha.
- 2 Rolling of pugged paddocks is being undertaken to level out the ground while the soil is still soft.
- 3 The first group of calves have been weaned.

PASTURE INFORMATION	Farm			Irrigated			Rain-fed		
	Last Week	This Week	Variation	Last Week	This Week	Variation	Last Week	This Week	Variation
Grazed milking area (ha)	108.4	108.4	0.0	38.9	38.9	0.00	69.5	69.5	0.00
Rotation Length (days)	37	36	-1	35	41	6	38	33	-5
Grazing allocation per day (ha)	3.0	3.1	0.10	1.1	1.0	0.16	1.8	2.1	0.26
Average time since last grazed (days)	48	27	-20	61	29	-32	40	26	-14
Leaf appearance rate (days per leaf)	16	15	-1	16	15	-1	16	15	-1
Average Pasture Cover (kgDM/ha)	2256	2505	249	2212	2552	340	2281	2479	198
Pasture Growth Rate (kgDM/ha/day)	73	69	-4	63	75	13	79	64	-14
Post Grazing Biomass (kgDM/ha)	1560	1681	121						
Nitrogen applied YTD (kgN/ha)	14	21	6	2	10	7	10	5	-6

*Please note all pasture calculations detailed above are based on the current Grazed Milking Area

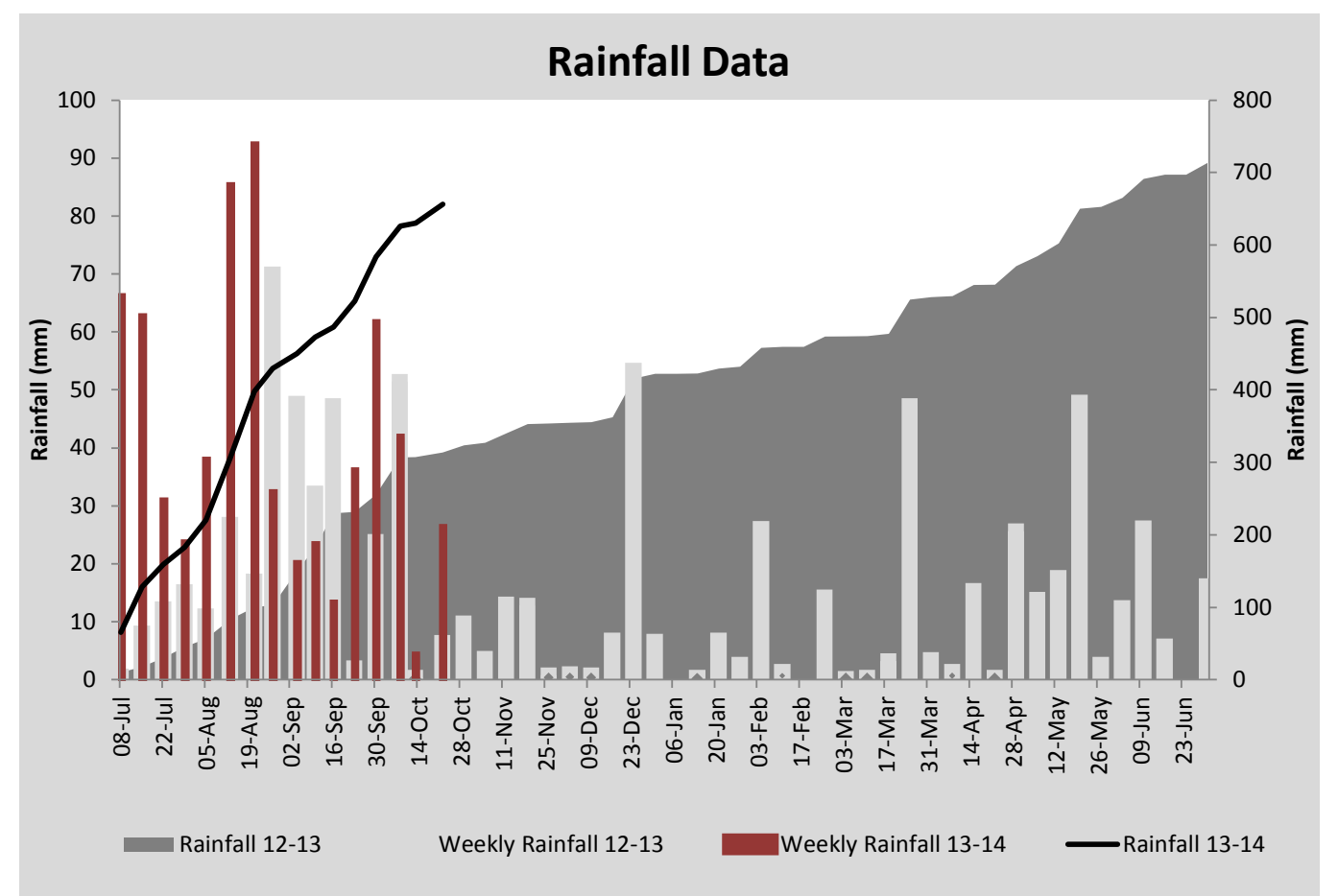
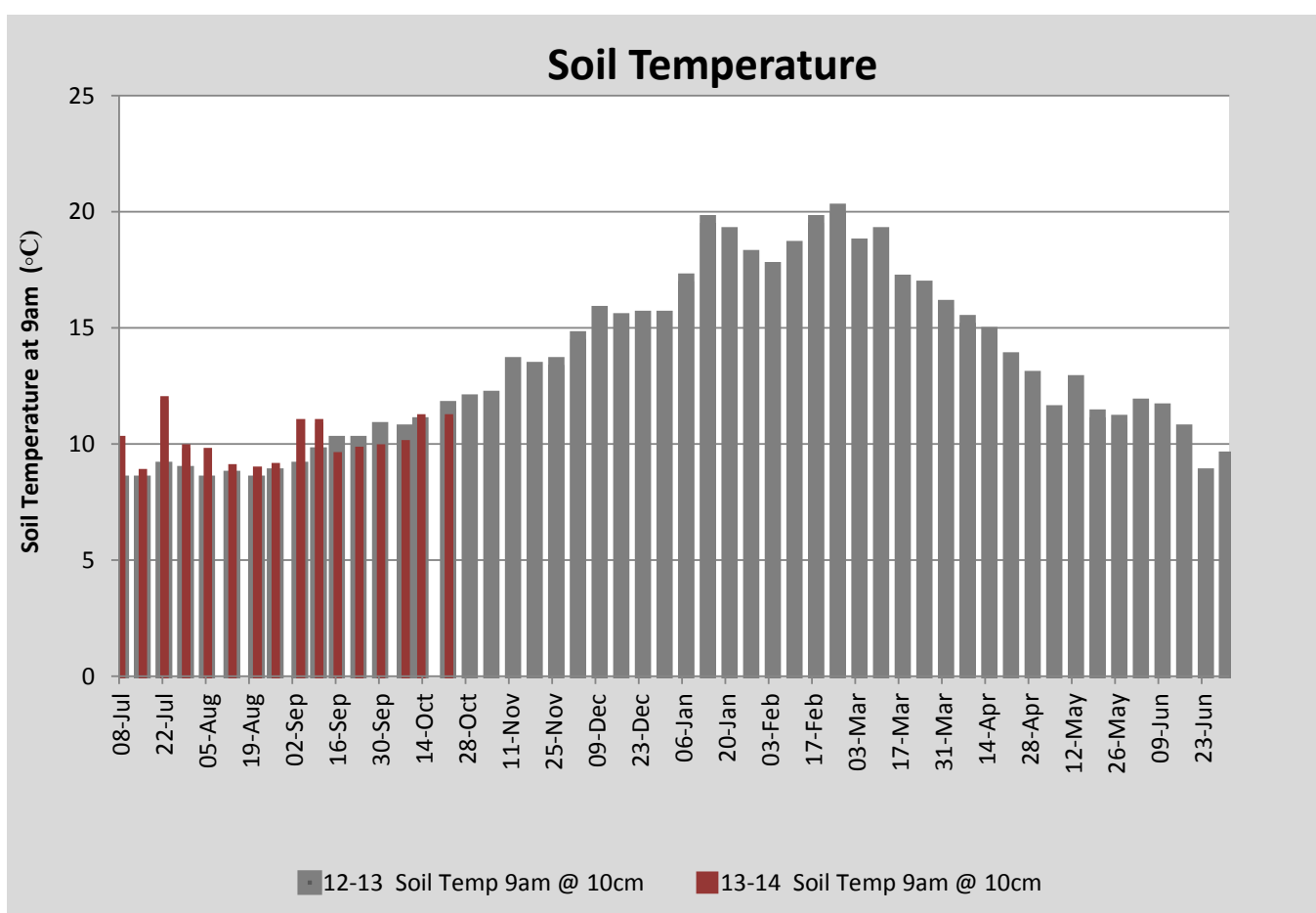
MILK PRODUCTION	Last Week	This Week	Variation
Average No cows in milk (vat)	303	298	-5
Litres per cow	23.7	23.3	0.3
% Fat	3.82	3.87	0.05
% Protein	3.08	3.00	0.08
MS/cow/day	1.62	1.61	0.02
MS/ha/day	4.35	4.24	0.12
BMCC	206	235	29
Average Liveweight (kg)			
	Budget	To Date	Variation
Total Milk Production (kgMS)	36685	26569	72%
MS/ha YTD	328	259	-69



Last 7 days					
Milkers Diet	kg DM	ME	CP	NDF	\$/cow
Pasture Intake	0.0	0.0	0%	0%	0.0
Concentrates	0.0	0.0	0.0	0.0	0.0
Silage	0.0	0.0	0.0	0.0	0.0
Grazed forage	0.0	0.0	0.0	0.0	0.0
Other feeds	0.0	0.0	0.0	0.0	0.0
Total	0	0	0	0	0
Target	0		0	0	0



The first group of calves were weaned during the week.



Analysis			
Expected growth rate next 7 days (kgDM/ha/day)	60	Target Leaf Grazing Stage	2.0
Total Demand from Pasture (kgDM/ha/day)	47	Predicted APC 7 days time	2594
APC balance (kgDM/ha/day)	13	Predicted APC Change	88.8

Discussion

The average pasture cover has increased significantly over the past week. Nineteen hectares of the run-off area is ready to cut for silage as soon as weather permits. Urea and capital fertiliser (9:6:9:7 at 200 kg/ha) has been applied to the run-off areas that have already been baled which should ensure good regrowth. Urea has also been applied to recently grazed paddocks on the milking area at a rate of 80 kg/ha (36 kg N/ha). Rolling of paddocks which have been badly pugged is being undertaken to level the soil. A paddock has been prepared for sowing lucerne – this will compare several varieties. Fixed time insemination of the heifers has taken place and ‘scratchies’ (heat mount detectors) were put on the milking herd on Monday (21st October) with mating of the cows starting on the following day. The first group of calves have been weaned. This is being based on the weight of the calves with the Jersey ‘type’ crossbreeds being weaned at 80 kg, Jersey x Friesians at 90 kg and Friesians at 100 kg. A vacuum pump breakdown this week resulted in a missed milking. This caused the bulk milk cell count to rise and also an increase in the incidence of mastitis which is the reason that the number of cows being milked into the vat has decreased. The latest bulk milk cell count is back down to 146,000 cells/ml.

22 October 2013

