

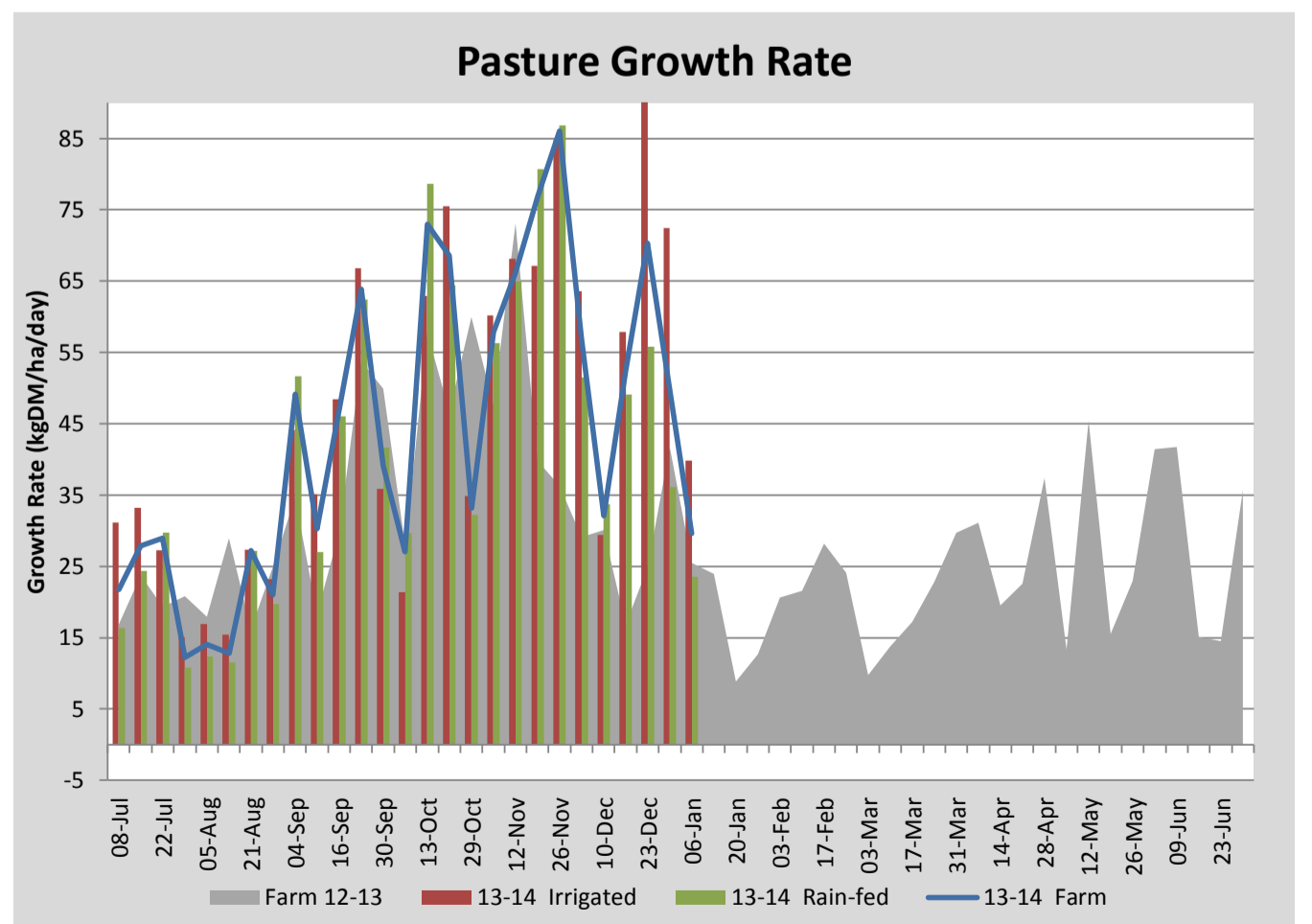
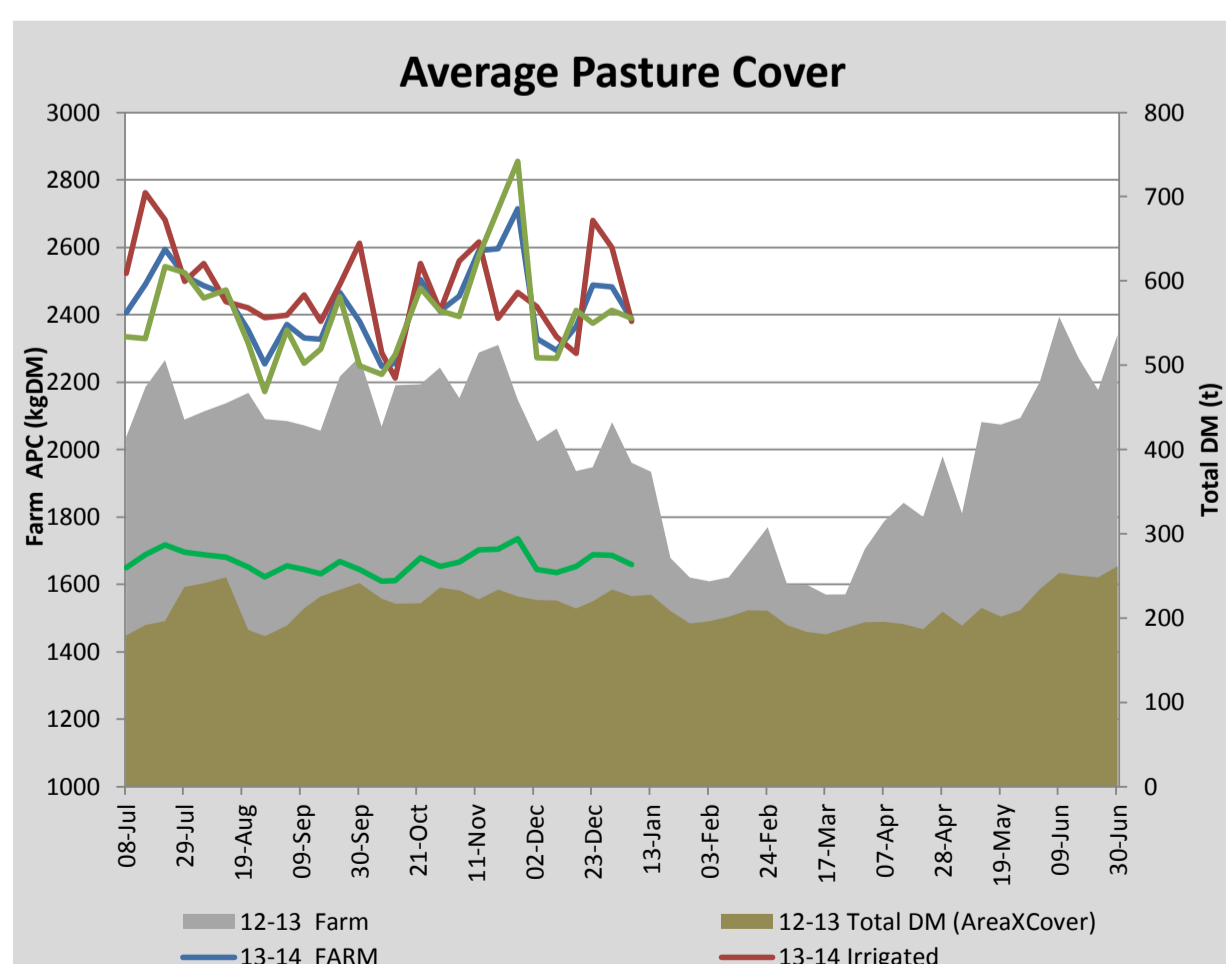
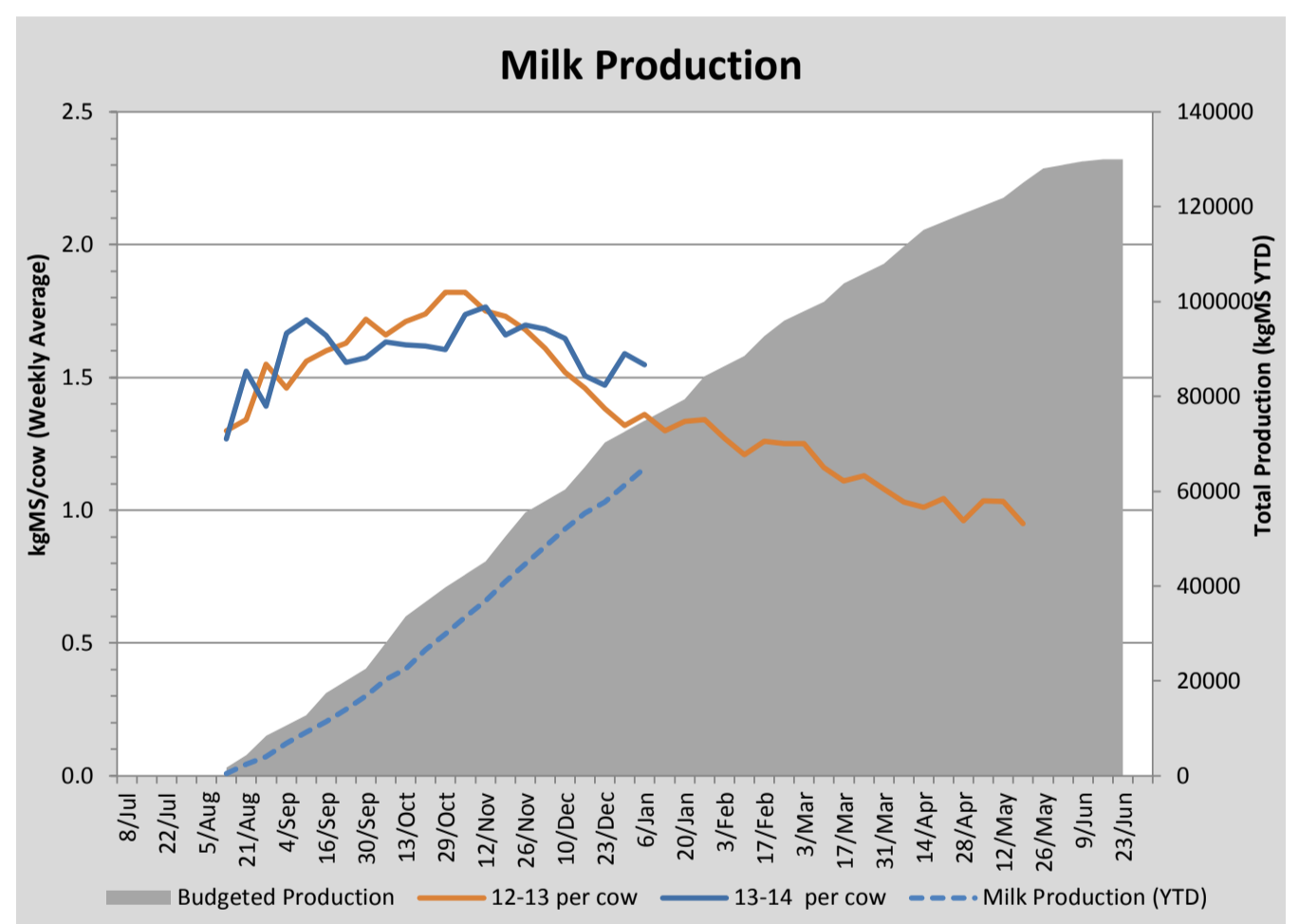
## Key Summary Points

- 1** Average pasture cover has dropped this week with cooler average soil temperature and dry windy conditions (until late in the week) contributing to reduced growth rates on both the irrigated and rainfed areas of the platform.
- 2** MS production dipped a little this week however it is still holding above 1.5kgMS/cow/day.
- 3** Key tasks for the coming week are to continue to manage residuals via pregraze topping (where required), thistle spraying and to cut the remaining hay paddocks on the run off block.

PASTURE INFORMATION	Farm			Irrigated			Rain-fed		
	Last Week	This Week	Variation	Last Week	This Week	Variation	Last Week	This Week	Variation
Grazed milking area (ha)	110.5	110.5	0.0	41.0	41.0	0.0	69.5	69.5	0
Rotation Length (days)	35	32	-3	22	41	19	53	28	-26
Grazing allocation per day (ha)	3.2	3.5	0.3	1.9	1.0	-0.9	1.3	2.5	1.2
Average time since last grazed (days)	30	33	3	29	28	-1	31	36	5
Leaf appearance rate (days per leaf)	10	11	1	9	10	1	11	12	1
Average Pasture Cover (kgDM/ha)	2482	2386	-96	2600	2379	-220	2412	2389	-23
Pasture Growth Rate (kgDM/ha/day)	50	30	-20	72	40	-33	36	24	-13
Post Grazing Biomass (kgDM/ha)	1541	1550	9						
Nitrogen applied YTD (kgN/ha)	76	85	9	0	13	13	0	7	7

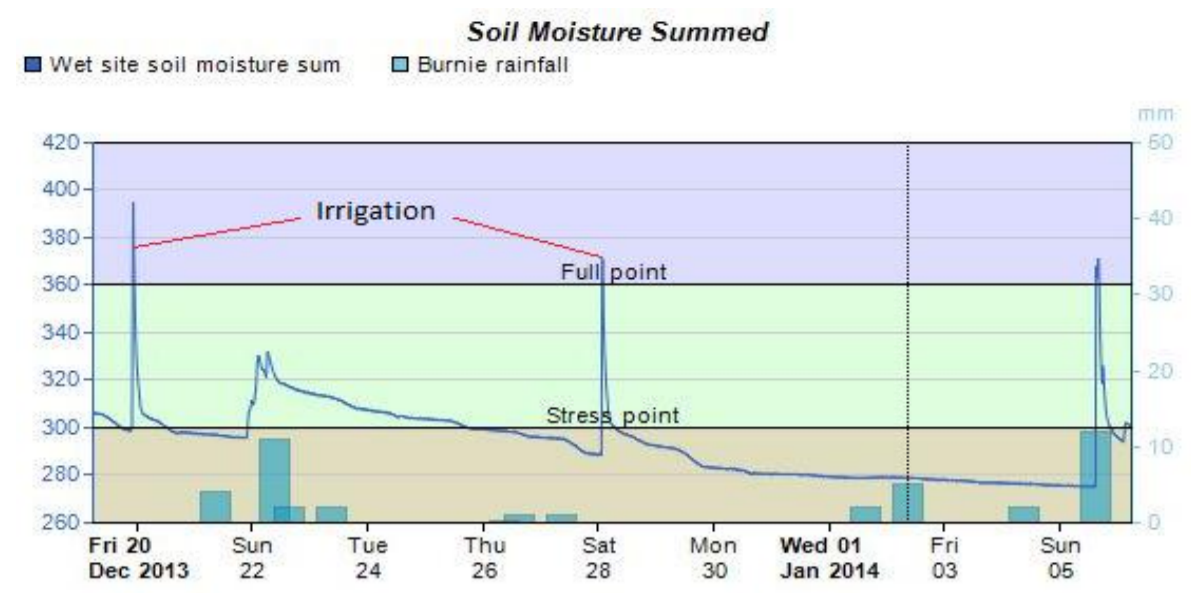
\*Please note all pasture calculations detailed above are based on the current Grazed Milking Area

MILK PRODUCTION	Last Week	This Week	Variation
Average No. cows in milk (vat)	327	334	7
Litres per cow	22.0	21.1	-0.9
% Fat	4.10	4.13	0.03
% Protein	3.15	3.28	0.13
MS/cow/day	1.59	1.55	-0.04
MS/ha/day	4.60	4.57	-0.03
BMCC	145	157	11
Average Liveweight (kg)	499	497	-2
	Budget	To Date	Variation
Total Milk Production (kgMS)	74,878	64,931	87%
MS/ha YTD	669	621	-48

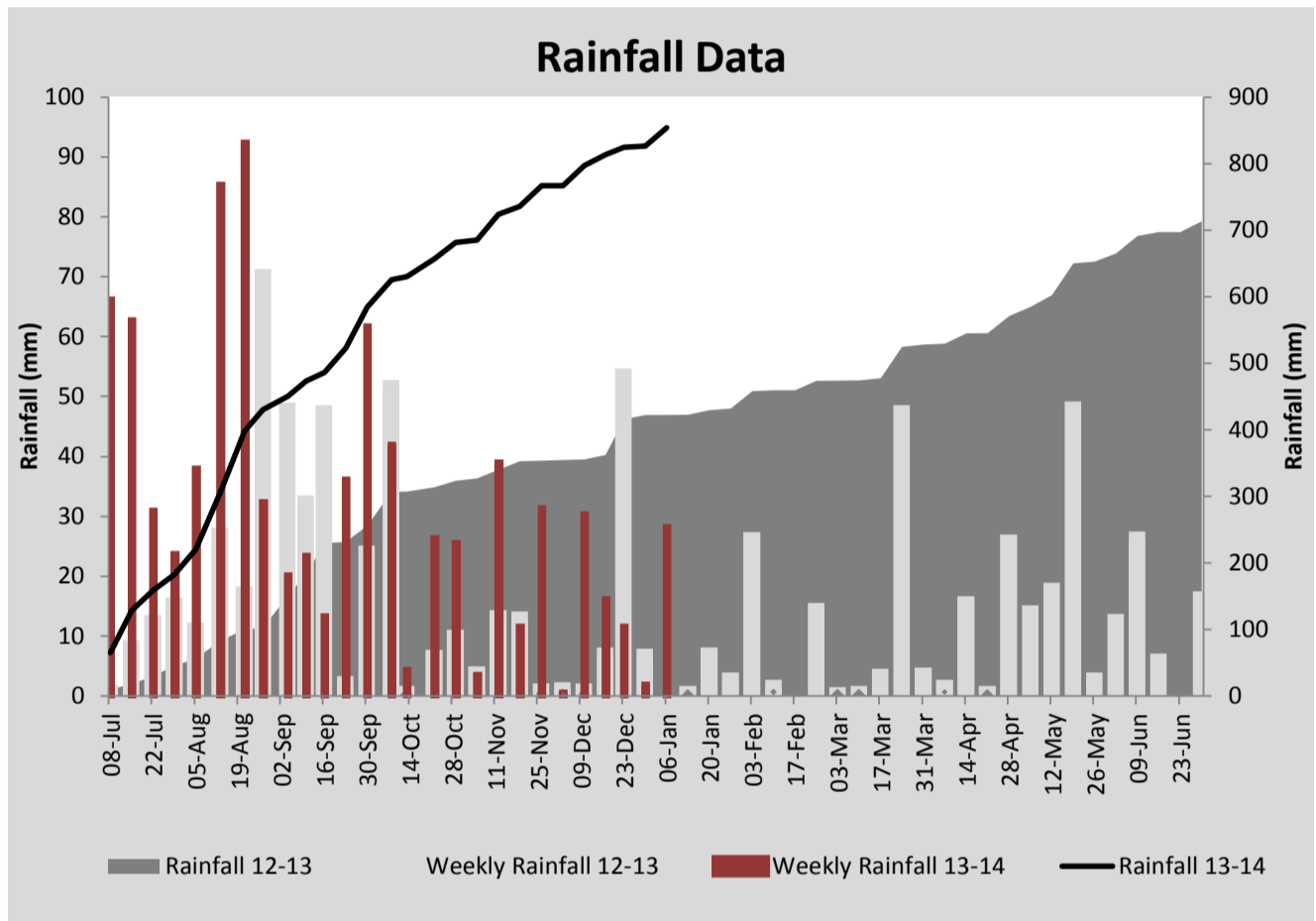
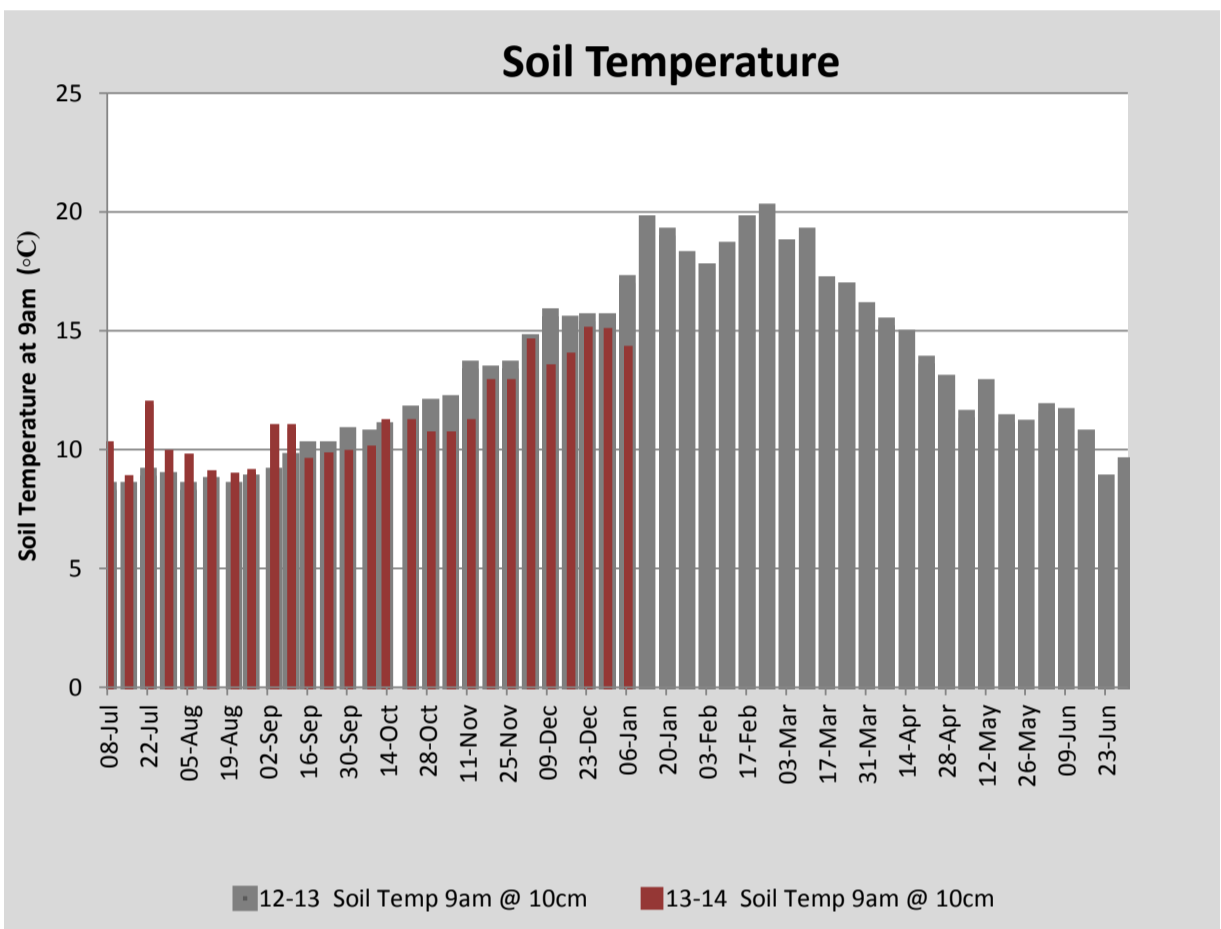


Last 7 days					
Milkers Diet	kg DM	MJ ME	CP (%)	NDF (%)	\$/cow
Pasture Intake	14.7	11.3	20.8	44.1	0.0
Concentrates	3.5	13.0	11.0	21.0	0.0
Silage	0.8	10.5	15.0	49.0	0.0
Grazed forage	0.0	0.0	0.0	0.0	0.0
Other feeds	0.0	0.0	0.0	0.0	0.0
<b>Total</b>	<b>19</b>	<b>220</b>	<b>18.8</b>	<b>40.0</b>	<b>0</b>
<b>Target</b>		<b>191</b>	<b>16-18</b>	<b>&gt;33</b>	<b>0</b>

Note: silage nutritional content is estimated based on pasture analysis during silage season, testing will be conducted early in 2014.



Wet site soil moisture plot with irrigation marked



Analysis			
Expected growth rate next 7 days (kgDM/ha/day)	45	Target Leaf Grazing Stage	2.5
Total Demand from Pasture (kgDM/ha/day)	48	Predicted APC 7 days time	2365
APC balance (kgDM/ha/day)	-3	Predicted APC Change	-20.7

## Discussion

Average pasture cover has dropped this to week just under 2400kgDM/ha with reduced growth rates observed on both the rainfed and irrigated portions of the platform. Soil moisture probes under the centre pivot indicate that the 'wet' zones are have dried out significantly over the past couple of weeks under the current variable rate irrigation prescription map while the 'dry' zones are remaining close to field capacity (Variable rate is achieved by varying the percentage 'on time' of banks of sprinklers with 100% applying approximately 13mm and 0% 0mm). We will look to increase the water rate on the 'wet' zones over the coming weeks to maintain adequate plant available water. Good rainfall late in the week should help to hold APC on the dryland paddocks into the coming week however with currently observed reduction in growth rate we will look to slow the rotation on these paddocks in the coming weeks. Pre-graze topping on selected paddocks has been effective in managing residuals to target covers and we will continue with this in the coming week. Per cow MS production dipped slightly this week to 1.55kgMS/ha which is most likely linked to reduced pasture quality.

# 6 January 2014

