

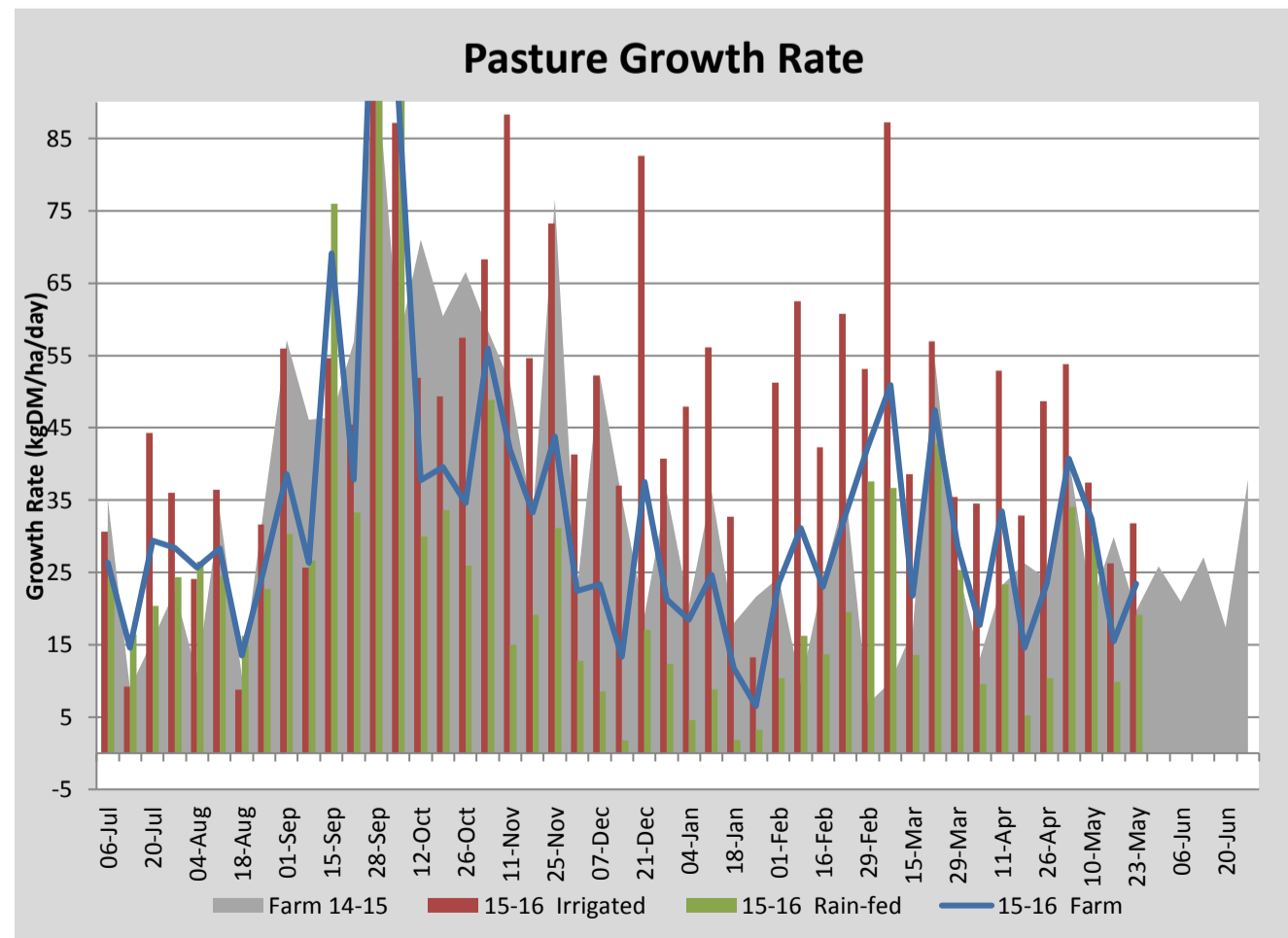
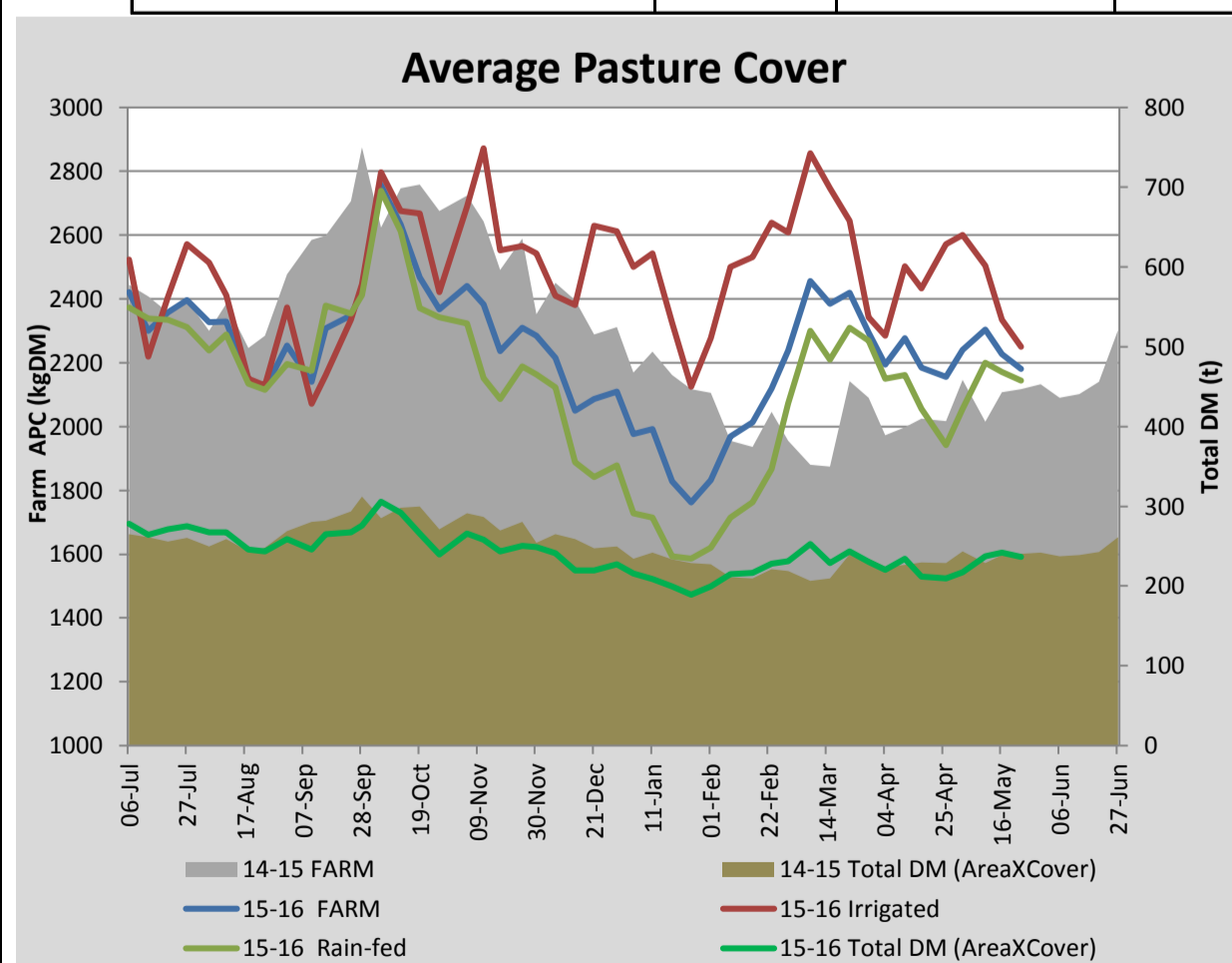
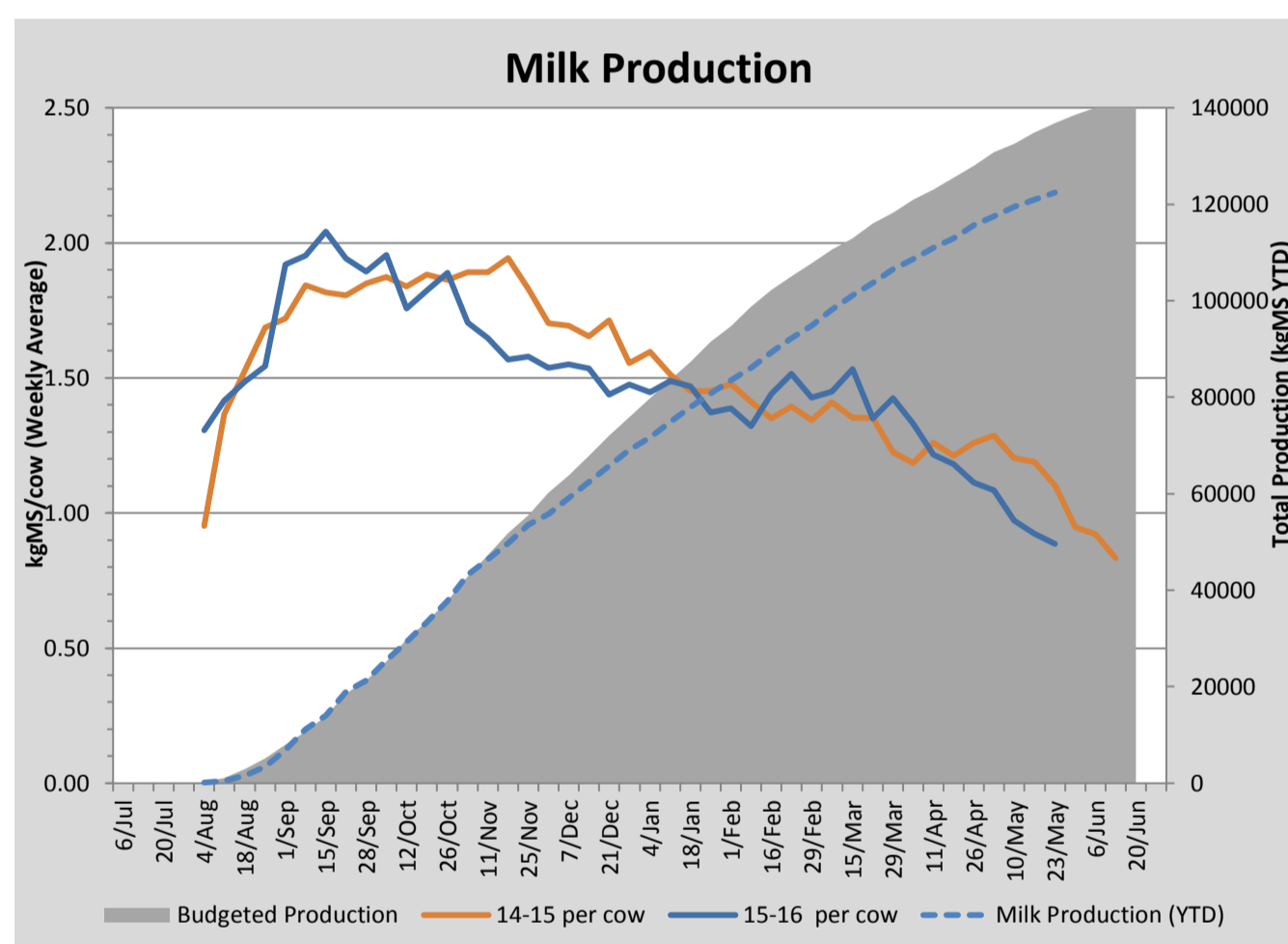
Key Summary Points

- 1 Cow production continues to decline and all cows will be dried off early June.
- 2 20 cows will be dried off during the week as their production has dropped below 6 litres/day and this will ease grazing pressure on the milking platform.
- 3 Cull cows (15 empties) were sold last week.

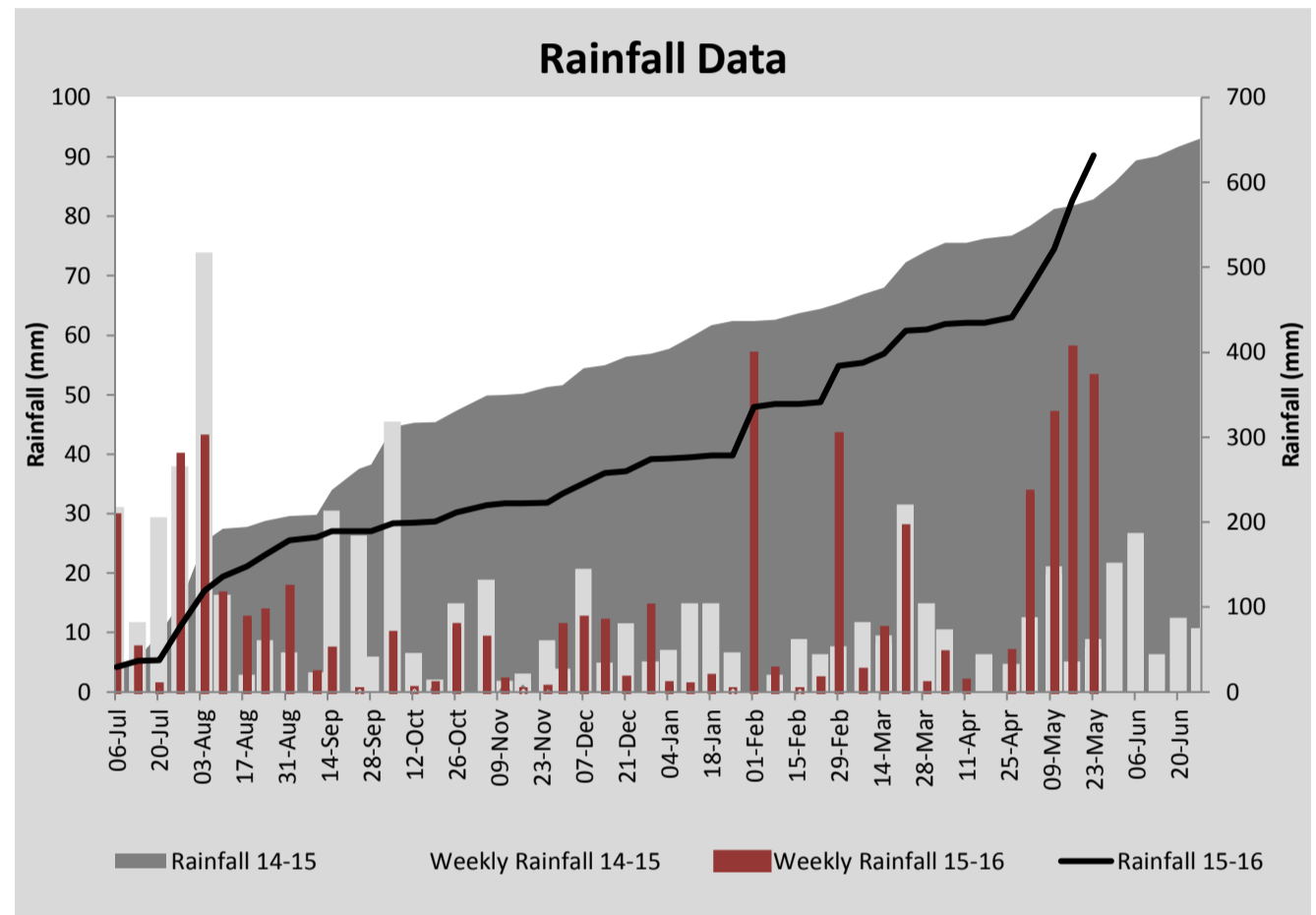
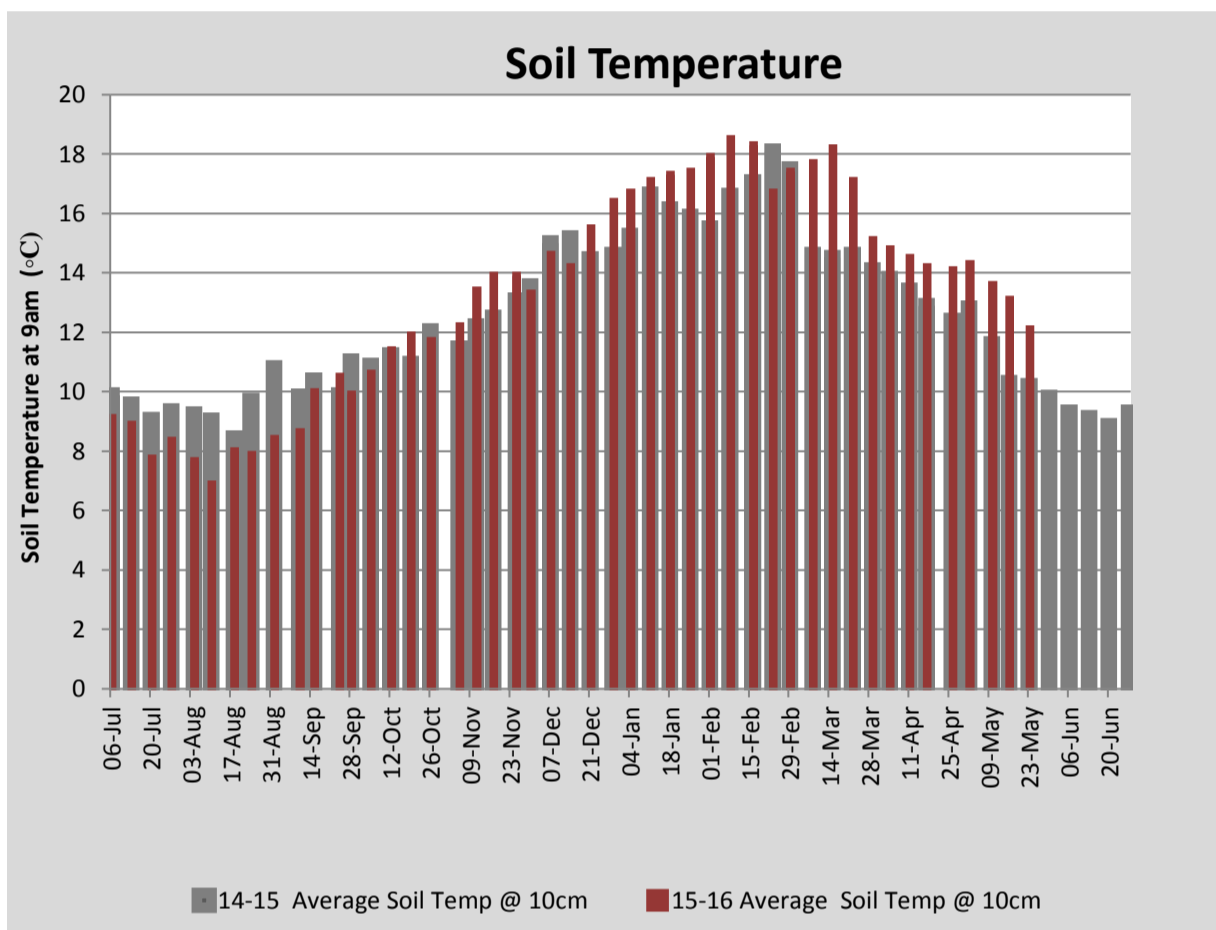
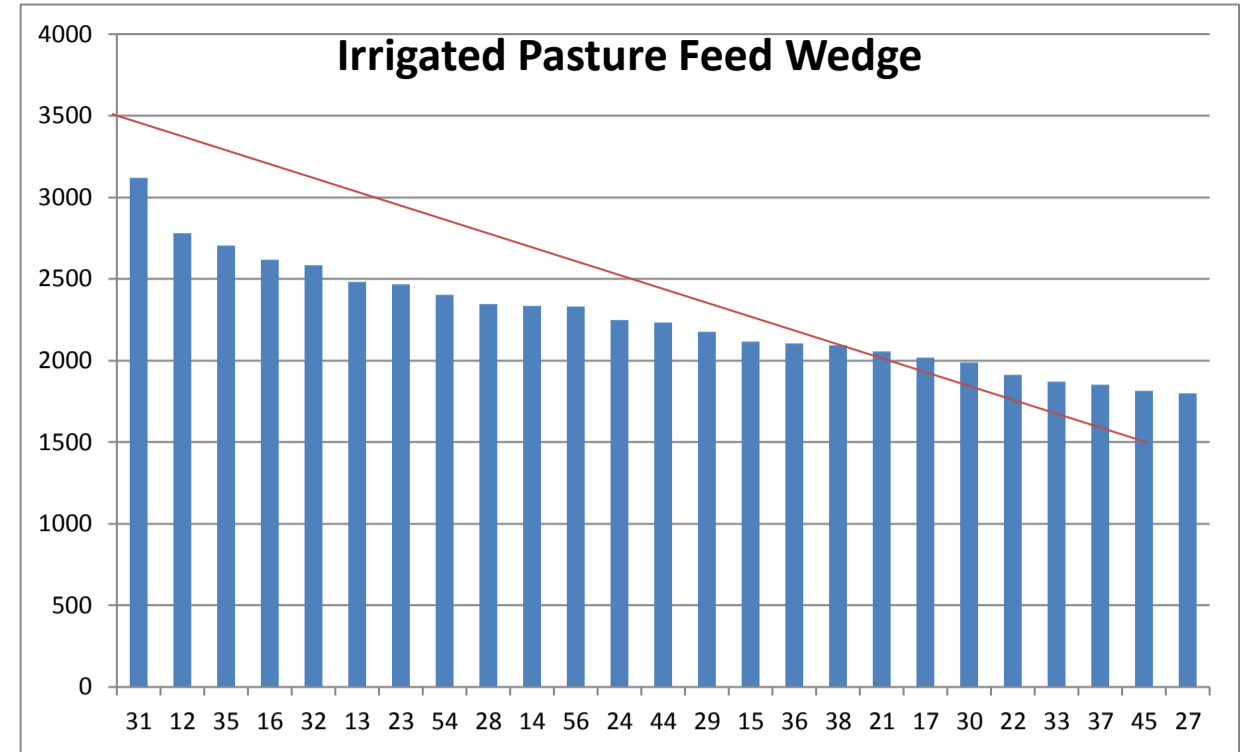
PASTURE INFORMATION	Farm			Irrigated			Rain-fed		
	Last Week	This Week	Variation	Last Week	This Week	Variation	Last Week	This Week	Variation
Grazed milking area (ha)	108.6	108.6	0.0	37.2	37.2	0.0	71.5	71.5	0
Rotation Length (days)	44	43	-1	26	31	5	69	55	-13
Grazing allocation per day (ha)	2.5	2.5	0.0	1.4	1.2	-0.2	1.0	1.3	0.3
Average time since last grazed (days)	41	39	-3	38	32	-6	43	42	-1
Leaf appearance rate (days per leaf)	17	17	0	17	17	0	17	17	0
Average Pasture Cover (kgDM/ha)	2227	2180	-47	2334	2250	-84	2171	2143	-28
Pasture Growth Rate (kgDM/ha/day)	15	23	8	26	32	6	10	19	9
Post Grazing Biomass (kgDM/ha)	1550	1580	30						
Nitrogen applied YTD (kgN/ha)	90	90	0	0	0	0	0	0	0

*Please note all pasture calculations detailed above are based on the current Grazed Milking Area

MILK PRODUCTION	Last Week	This Week	Variation
Average No. cows in milk (vat)	257	245	-12
Litres per cow	9.0	8.5	-0.5
% Fat	5.87	5.90	0.03
% Protein	4.31	4.48	0.17
MS/cow/day	0.92	0.89	-0.04
MS/ha/day	2.10	1.92	-0.18
BMCC	219,714	213,429	-6,286
Average Liveweight (kg)	508	510	2
	Budget	To Date	Variation
Total Milk Production (kgMS)	136,804	122,417	89%
MS/ha YTD	1200	1116	-84



Last 7 days					
Milkers Diet	kg DM	MJ ME	CP (%)	NDF (%)	\$/cow
Pasture Intake	11.1	12.0	19.0	48.0	0.0
Concentrates	4.5	12.9	15.6	20.3	0.0
Silage	2.4	10.0	0.0	0.0	0.0
Grazed forage	0.0	0.0	0.0	0.0	0.0
Other feeds	0.0	0.0	0.0	0.0	0.0
Total	18	215.3	15.6	34.7	0
Target		191	16-18	>33	0



Analysis			
Expected growth rate next 7 days (kgDM/ha/day)	20	Target Leaf Grazing Stage	2.5-3.0
Total Demand from Pasture (kgDM/ha/day)	27	Predicted APC 7 days time	2131
APC balance (kgDM/ha/day)	-7	Predicted APC Change	-49.0

Discussion

More rain (197 mm since the rains started in late April) has filled the dams and made some of the paddocks very wet. We are continuing to move the cows twice a day, even though they have been on once-a-day milking for the last 2 months, in an attempt to avoid pasture and soil damage on the wetter paddocks, these are mainly paddocks that were under irrigation. Cow production has continued to fall and it is likely that all cows will be dried off during the first week of June. With some finer weather conditions predicted for the next week it is likely that nitrogen will be applied to paddocks on the milking platform in order to build cover for calving. It has been too wet to apply nitrogen over the past 4 weeks, with high potential to cause serious damage to soils and pastures from using wheeled tractors on the wet paddocks and also from the risk of increased nitrogen leaching under the continually wet conditions.

23 May 2016

